



20S Proteasome α 3 (phospho Ser250) Polyclonal Antibody

Catalog No	YP-Ab-02395
Isotype	IgG
Reactivity	Human;Mouse;Rat
Applications	WB;IHC;IF;ELISA
Gene Name	PSMA3
Protein Name	Proteasome subunit alpha type-3
Immunogen	The antiserum was produced against synthesized peptide derived from human Proteasome alpha3 around the phosphorylation site of Ser250. AA range:206-255
Specificity	Phospho-20S Proteasome α 3 (S250) Polyclonal Antibody detects endogenous levels of 20S Proteasome α 3 protein only when phosphorylated at S250.
Formulation	Liquid in PBS containing 50% glycerol, 0.5% BSA and 0.02% sodium azide.
Source	Polyclonal, Rabbit,IgG
Purification	The antibody was affinity-purified from rabbit antiserum by affinity-chromatography using epitope-specific immunogen.
Dilution	WB: 1/500 - 1/2000. IHC: 1/100 - 1/300. ELISA: 1/10000.. IF 1:50-200
Concentration	1 mg/ml
Purity	$\geq 90\%$
Storage Stability	-20°C/1 year
Synonyms	PSMA3; HC8; PSC8; Proteasome subunit alpha type-3; Macropain subunit C8; Multicatalytic endopeptidase complex subunit C8; Proteasome component C8
Observed Band	32kD
Cell Pathway	Cytoplasm . Nucleus . Translocated from the cytoplasm into the nucleus following interaction with AKIRIN2, which bridges the proteasome with the nuclear import receptor IPO9. .
Tissue Specificity	Bone marrow,Epithelium,Liver,Pancreas,Urinary bladder,
Function	catalytic activity: Cleavage of peptide bonds with very broad specificity.,function: The proteasome is a multicatalytic proteinase complex which is characterized by its ability to cleave peptides with Arg, Phe, Tyr, Leu, and Glu adjacent to the leaving group at neutral or slightly basic pH. The proteasome has an ATP-dependent proteolytic activity.,similarity: Belongs to the peptidase T1A family.,subunit: The 26S proteasome consists of a 20S proteasome core and two 19S regulatory subunits. The 20S proteasome core is composed of 28 subunits that are arranged in four stacked rings, resulting in a barrel-shaped structure. The two end rings are each formed by seven alpha subunits, and the two central rings are each formed by seven beta subunits.,subunit: The 26S proteasome consists of a 20S proteasome core and two 19S regulatory subunits. The 20S proteasome



core is composed of 28 subunits that are

Background

The proteasome is a multicatalytic proteinase complex with a highly ordered ring-shaped 20S core structure. The core structure is composed of 4 rings of 28 non-identical subunits; 2 rings are composed of 7 alpha subunits and 2 rings are composed of 7 beta subunits. Proteasomes are distributed throughout eukaryotic cells at a high concentration and cleave peptides in an ATP/ubiquitin-dependent process in a non-lysosomal pathway. An essential function of a modified proteasome, the immunoproteasome, is the processing of class I MHC peptides. This gene encodes a member of the peptidase T1A family, that is a 20S core alpha subunit. Two alternative transcripts encoding different isoforms have been identified. [provided by RefSeq, Jul 2008],

matters needing attention

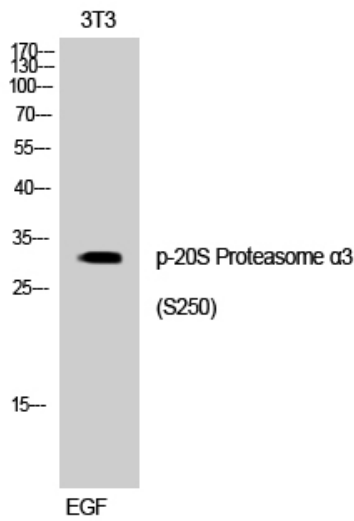
Avoid repeated freezing and thawing!

Usage suggestions

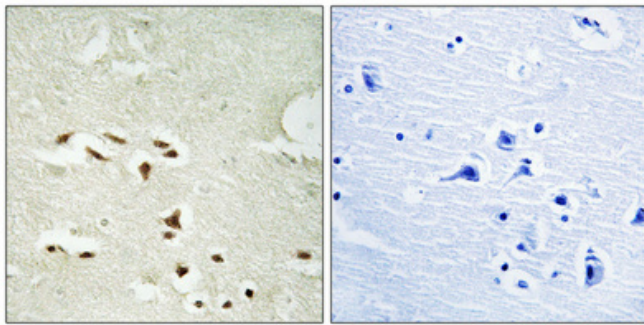
This product can be used in immunological reaction related experiments. For more information, please consult technical personnel.



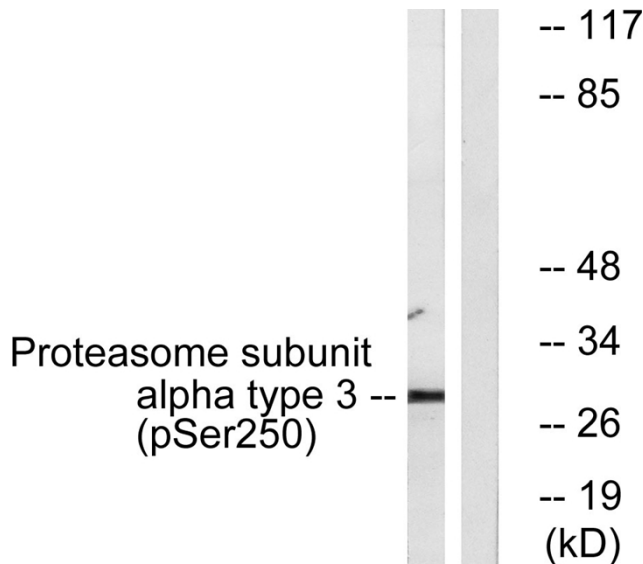
Products Images



Western Blot analysis of 3T3 cells using Phospho-20S Proteasome $\alpha 3$ (S250) Polyclonal Antibody



Immunohistochemical analysis of paraffin-embedded Human brain. Antibody was diluted at 1:100 (4° overnight). High-pressure and temperature Tris-EDTA, pH 8.0 was used for antigen retrieval. Negative control (right) obtained from antibody was pre-absorbed by immunogen peptide.



Western blot analysis of lysates from NIH/3T3 cells treated with EGF 200ng/ml 30', using Proteasome alpha3 (Phospho-Ser250) Antibody. The lane on the right is blocked with the phospho peptide.